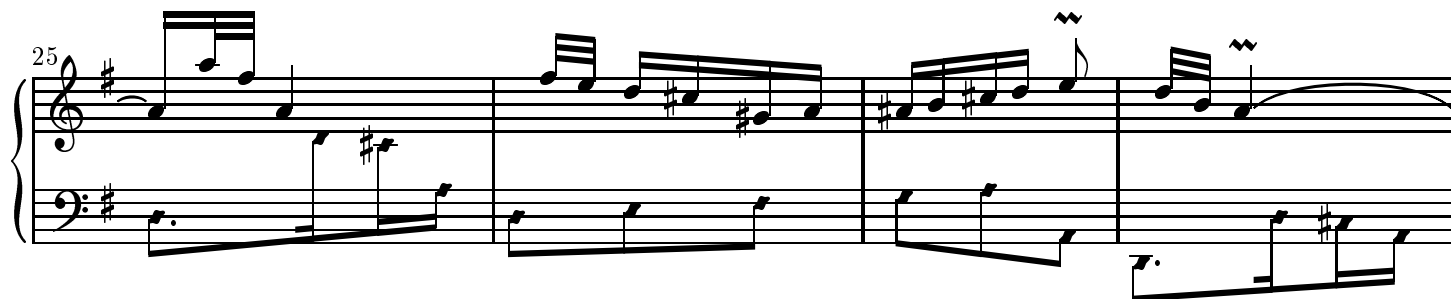
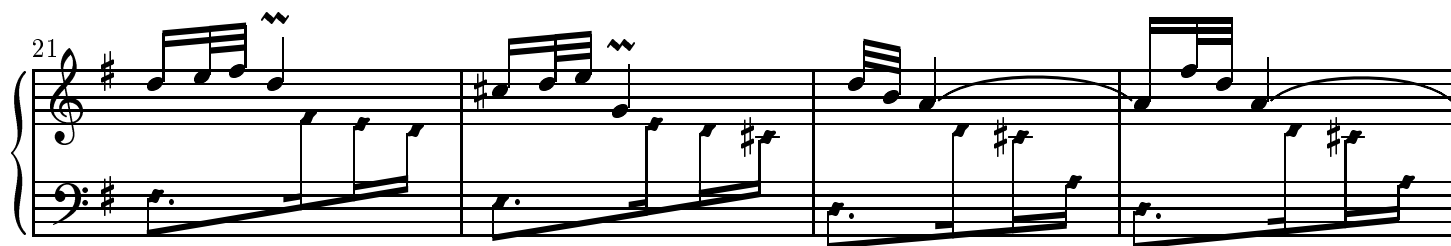
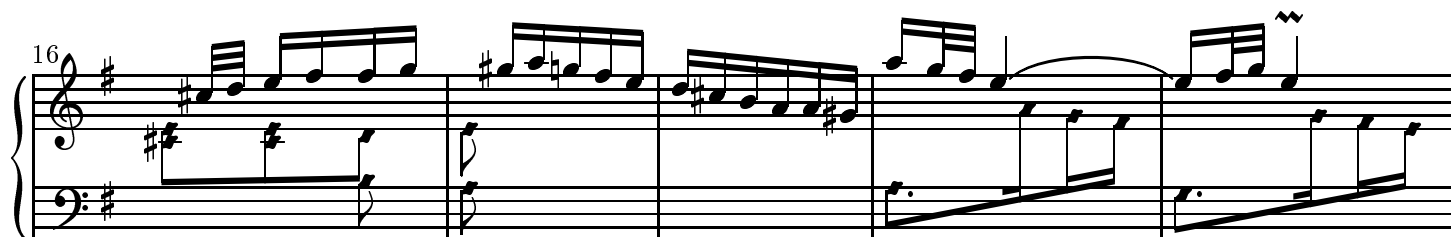
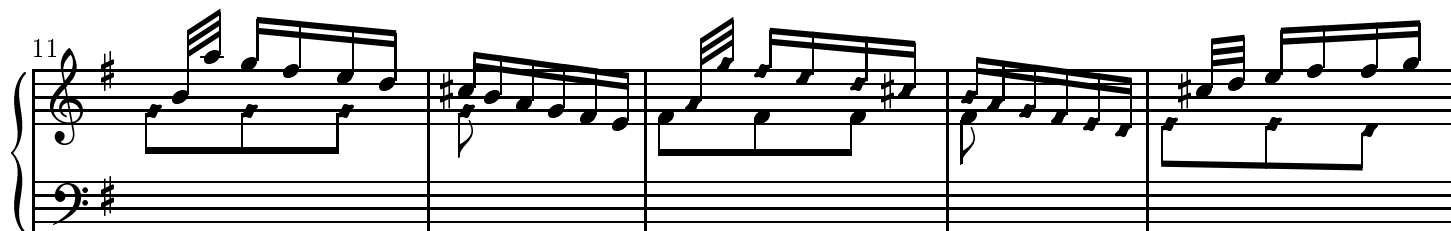
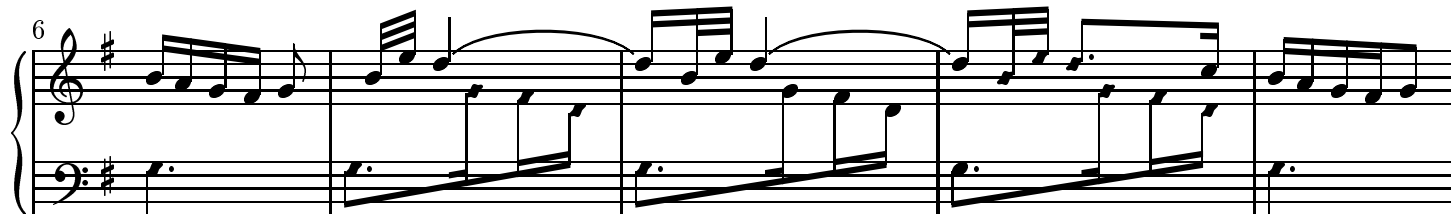
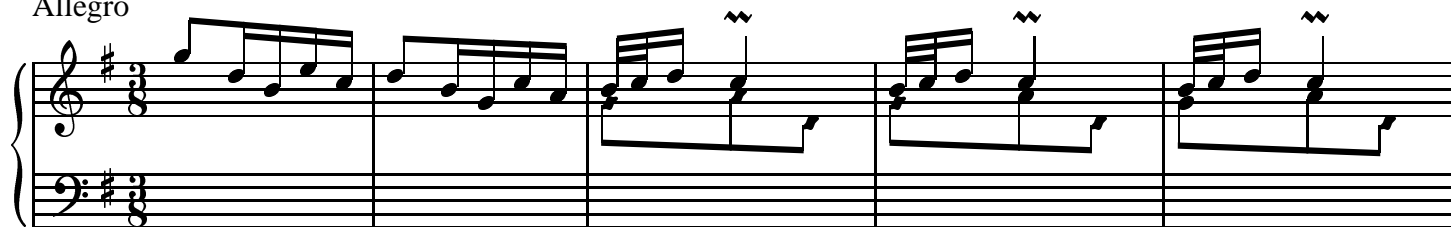


Sonata

DOMENICO SCARLATTI
K.171 L.77

Allegro



29

System 1 (Measures 29-32): Treble clef, key of D major. Measure 29: Treble has eighth notes D4, E4, F#4, G4 with a fermata; Bass has eighth notes D3, E3, F#3, G3. Measure 30: Treble has eighth notes A4, B4, C5, D5 with a fermata; Bass has eighth notes A2, B2, C3, D3. Measure 31: Treble has eighth notes E5, F#5, G5, A5; Bass has eighth notes E3, F#3, G3, A3. Measure 32: Treble has eighth notes B5, C6, D6, E6 with a fermata; Bass has eighth notes B2, C3, D3, E3.

33

System 2 (Measures 33-37): Treble clef, key of D major. Measure 33: Treble has eighth notes F#4, G4, A4, B4 with a fermata; Bass has eighth notes F#2, G2, A2, B2. Measure 34: Treble has eighth notes C5, D5, E5, F#5 with a fermata; Bass has eighth notes C3, D3, E3, F#3. Measure 35: Treble has eighth notes G5, A5, B5, C6 with a fermata; Bass has eighth notes G2, A2, B2, C3. Measure 36: Treble has eighth notes D6, E6, F#6, G6 with a fermata; Bass has eighth notes D3, E3, F#3, G3. Measure 37: Treble has eighth notes A6, B6, C7, D7 with a fermata; Bass has eighth notes A2, B2, C3, D3.

38

System 3 (Measures 38-41): Treble clef, key of D major. Measure 38: Treble has eighth notes E6, F#6, G6, A6 with a fermata; Bass has eighth notes E3, F#3, G3, A3. Measure 39: Treble has eighth notes B6, C7, D7, E7 with a fermata; Bass has eighth notes B2, C3, D3, E3. Measure 40: Treble has eighth notes F#7, G7, A7, B7 with a fermata; Bass has eighth notes F#3, G3, A3, B3. Measure 41: Treble has eighth notes C8, D8, E8, F#8 with a fermata; Bass has eighth notes C4, D4, E4, F#4.

42

System 4 (Measures 42-45): Treble clef, key of D major. Measure 42: Treble has eighth notes G8, A8, B8, C9 with a fermata; Bass has eighth notes G4, A4, B4, C5. Measure 43: Treble has eighth notes D9, E9, F#9, G9 with a fermata; Bass has eighth notes D5, E5, F#5, G5. Measure 44: Treble has eighth notes A9, B9, C10, D10 with a fermata; Bass has eighth notes A6, B6, C7, D7. Measure 45: Treble has eighth notes E10, F#10, G10, A10 with a fermata; Bass has eighth notes E7, F#7, G8, A8.

46

System 5 (Measures 46-49): Treble clef, key of D major. Measure 46: Treble has eighth notes B10, C11, D11, E11 with a fermata; Bass has eighth notes B8, C9, D9, E9. Measure 47: Treble has eighth notes F#11, G11, A11, B11 with a fermata; Bass has eighth notes F#9, G9, A9, B9. Measure 48: Treble has eighth notes C12, D12, E12, F#12 with a fermata; Bass has eighth notes C10, D10, E10, F#10. Measure 49: Treble has eighth notes G12, A12, B12, C13 with a fermata; Bass has eighth notes G11, A11, B11, C12.

50

System 6 (Measures 50-53): Treble clef, key of D major. Measure 50: Treble has eighth notes D13, E13, F#13, G13 with a fermata; Bass has eighth notes D12, E12, F#12, G12. Measure 51: Treble has eighth notes A13, B13, C14, D14 with a fermata; Bass has eighth notes A13, B13, C14, D14. Measure 52: Treble has eighth notes E14, F#14, G14, A14 with a fermata; Bass has eighth notes E14, F#14, G14, A14. Measure 53: Treble has eighth notes B14, C15, D15, E15 with a fermata; Bass has eighth notes B14, C15, D15, E15.

55

59

63

Notes with oval heads may be played with the right hand, those with diamond heads with the left.

Copyright © John Sankey 2000. Typeset by GNU LilyPond 1.2.16. Released under the GNU General Public License. You are free to copy this document as much as you wish, in any format, as long as this notice appears on each copy to authorize further copying.